

GCSE Performing Arts. Drama

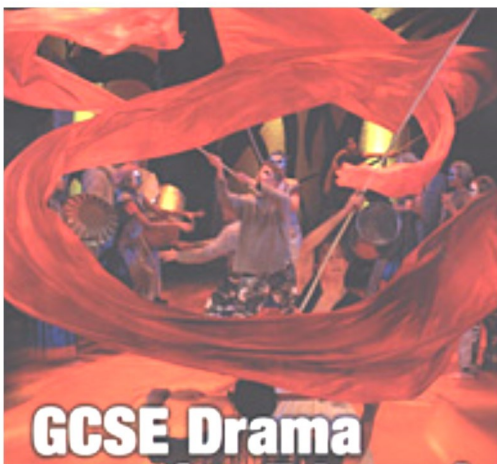
Outline of the course

Drama is an exciting, creative and challenging course; it aims to develop your skills as a performer and to understand the process leading to performance. You will use imagination, creativity and sensitivity and be able to develop skills of analysis in the study of performance texts, genres and performance activities. You will devise original pieces of work and perform existing repertoire. The course is divided into three components which you will study over the course:

1. Understanding drama
2. Devising drama
3. Texts in practice

Assessment

Unit 1 - Understanding Drama (Written)



What is assessed?

1. Knowledge and understanding of drama and theatre
 2. Study of one set play
- Analysis and evaluation of the work of live theatre makers

How is it assessed? Written exam (1 hour 45 minutes) - comprising of three sections:

A - Multiple choice (4 marks)

B - Four questions on a given extract from the set play (46 marks)

C - One two part question (from a choice) on the work of theatre makers in a single live theatre production (30 marks)

What is this worth?

- 80 marks 40% of overall GCSE

Externally set and marked.

Unit 2 - Devising Drama (Practical)

What is assessed?

1. Process of creating devised drama
 2. Performance of devised drama
- Analysis and evaluation of own work

How is it assessed?

- A written log (60 marks) Devised performance (20 marks)

What is this worth?

- 80 marks 40% of overall GCSE

Internally assessed by your teacher and externally moderated by AQA.

Unit 3 - Texts in practice (Practical)

What is assessed?

Performance of two extracts from one play which must contrast with the set play in component one

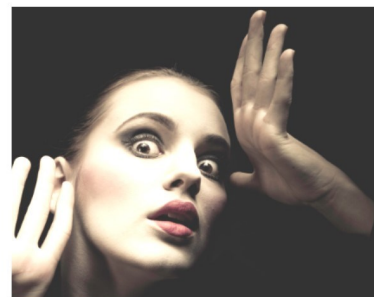
How is it assessed?

1. Performance of extract one (25 marks)
2. Performance of extract two (25 marks)

What is this worth?

- 50 marks 20% of overall GCSE

Marked entirely by AQA.



Why study Drama?

If you have a love for performance and the desire to take part in creative processes then drama could be the subject for you. If you feel you strive for excellence in all aspects of your work then please apply for this subject. Students studying drama enjoy the support of an active, enthusiastic and committed team of teachers; we expect the same from our students. This course requires enthusiasm, dedication and hard work. **This course is not suitable for students who do not wish to perform in front of an audience on a regular basis.**

For more information about this subject and the course, please contact your drama teacher.